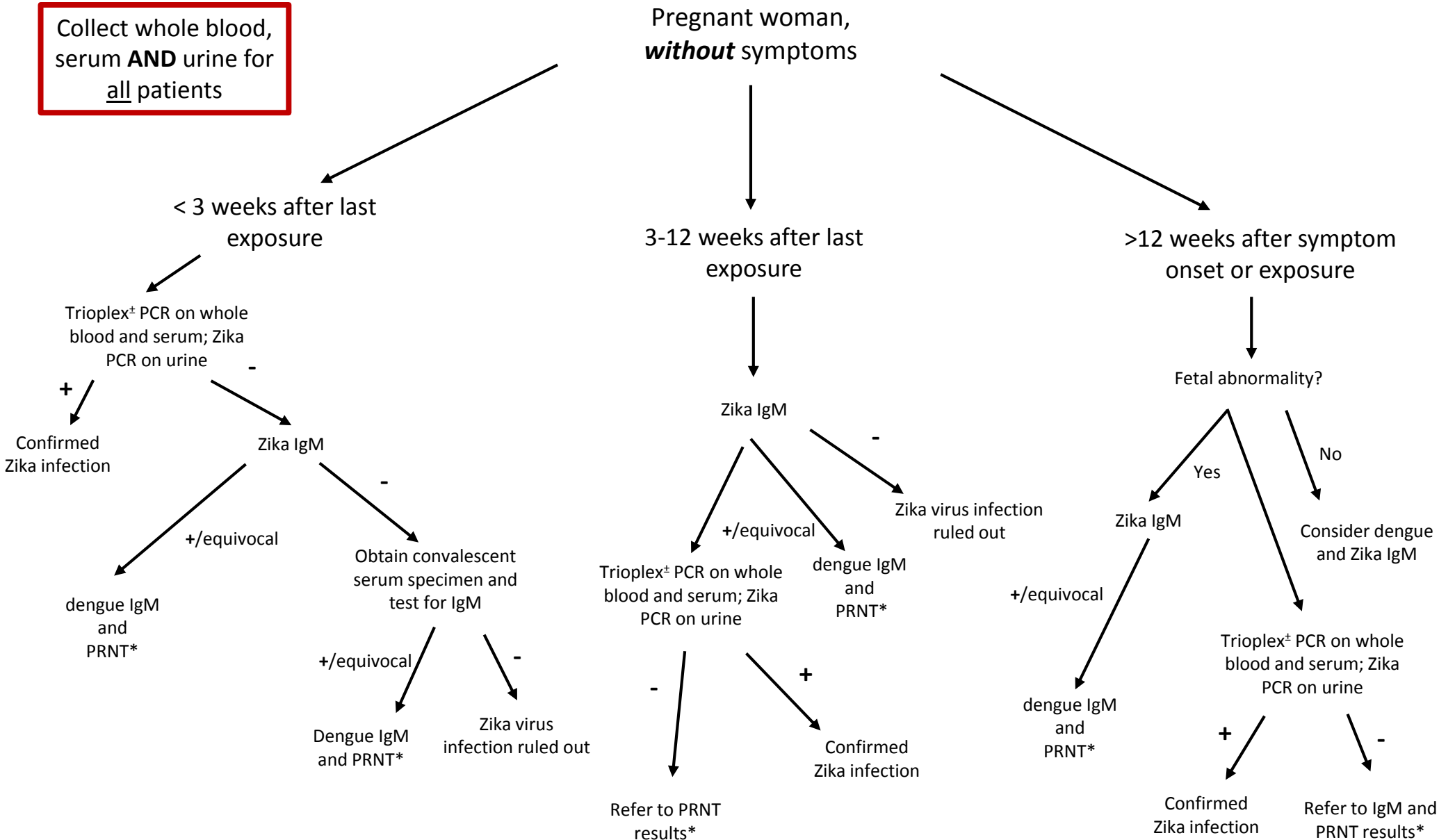


# Maryland Department of Health and Mental Hygiene Zika Diagnostic Testing Algorithm

Collect whole blood, serum **AND** urine for all patients

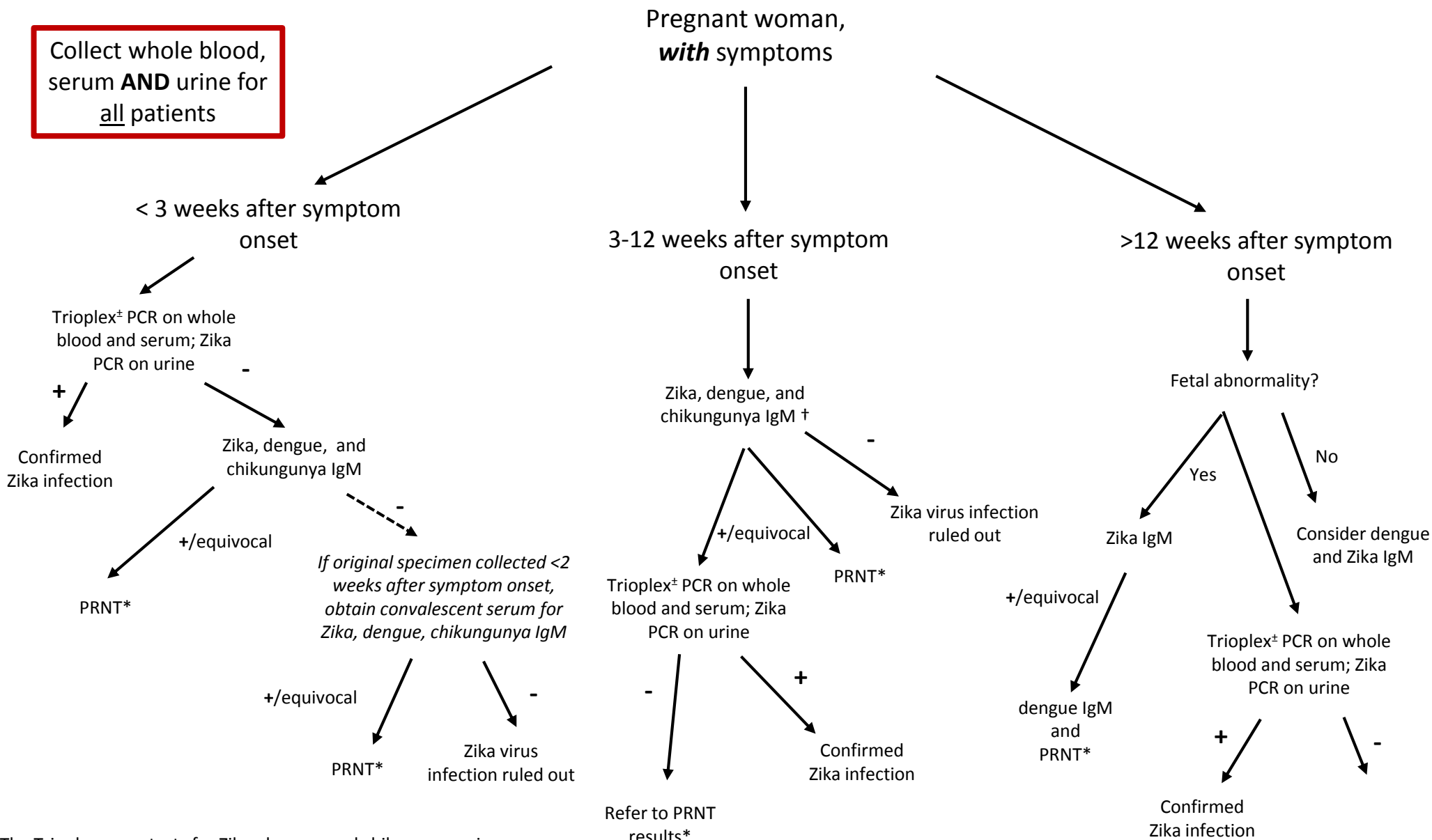


±The Triplex assay tests for Zika, dengue, and chikungunya viruses.

\*For interpretation of PRNT results, see: Rabe IB, Staples JE, Villanueva J, et al. Interim Guidance for Interpretation of Zika Virus Antibody Test Results. MMWR Morb Mortal Wkly Rep 2016;65. DOI: <http://dx.doi.org/10.15585/mmwr.mm6521e1>

# Maryland Department of Health and Mental Hygiene Zika Diagnostic Testing Algorithm

Collect whole blood, serum **AND** urine for all patients



±The Trioplex assay tests for Zika, dengue, and chikungunya viruses.

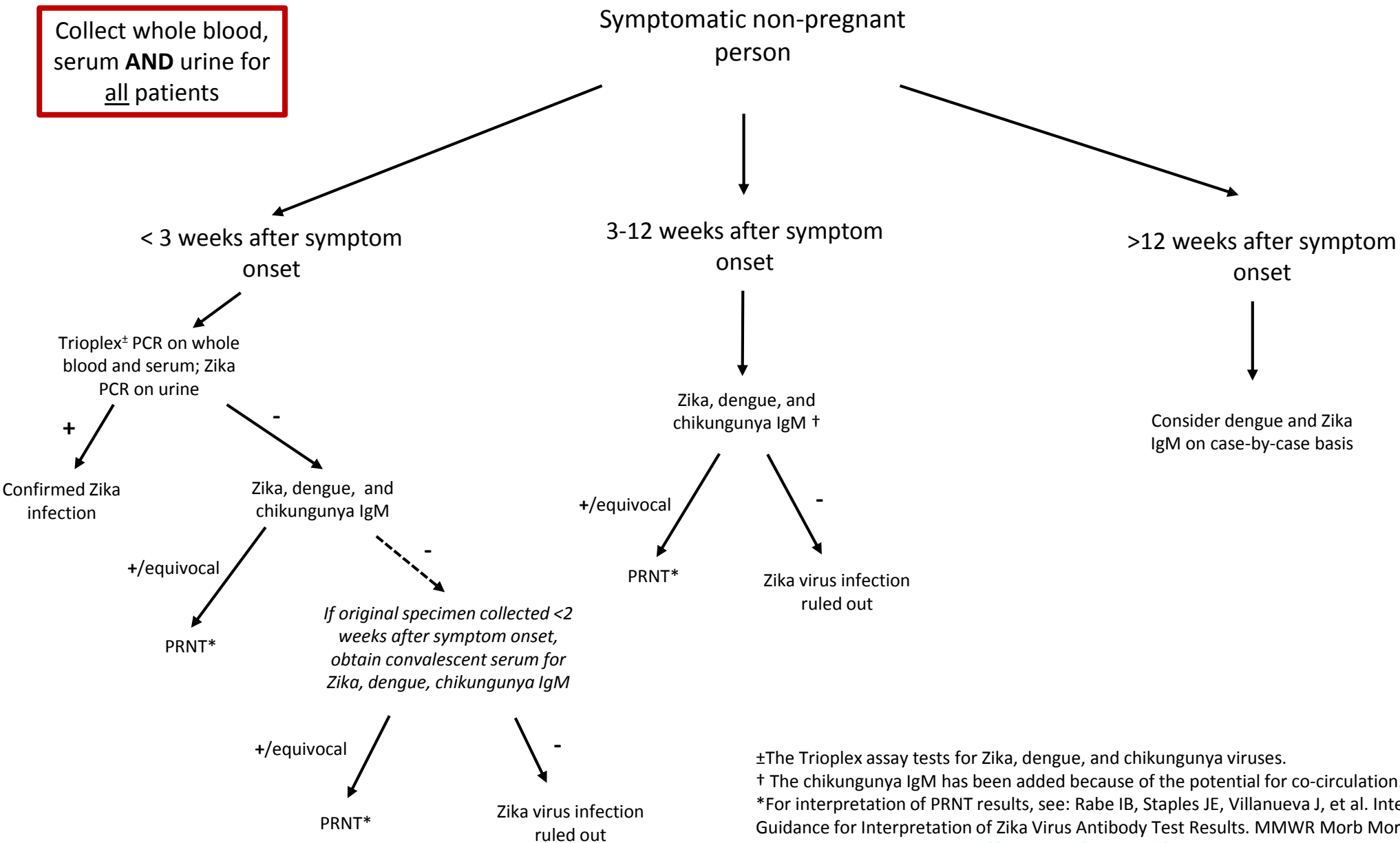
† The chikungunya IgM has been added because of the potential for co-circulation.

\*For interpretation of PRNT results, see: Rabe IB, Staples JE, Villanueva J, et al. Interim Guidance for Interpretation of Zika Virus Antibody Test Results. MMWR Morb

Mortal Wkly Rep 2016;65. DOI: <http://dx.doi.org/10.15585/mmwr.mm6521e1>

# Maryland Department of Health and Mental Hygiene Zika Diagnostic Testing Algorithm

Collect whole blood, serum **AND** urine for all patients



±The Trioplex assay tests for Zika, dengue, and chikungunya viruses.  
 † The chikungunya IgM has been added because of the potential for co-circulation.  
 \*For interpretation of PRNT results, see: Rabe IB, Staples JE, Villanueva J, et al. Interim Guidance for Interpretation of Zika Virus Antibody Test Results. MMWR Morb Mortal Wkly Rep 2016;65. DOI: <http://dx.doi.org/10.15585/mmwr.mm6521e1>